




Product Specification				
	Model: GKSR070LFKL41	Rev. No.	Issued Date.	Page.
		A	2025/09/30	1 / 24


Thin-Film-Transistor LCD Module
Model: GKSR070LFKL41

Acceptance

Solomon Goldentek Display Corp.
NO. 18, Daye St., Daliao Dist., Kaohsiung City 831134,
TAIWAN , R.O.C.

Approved and Checked by

Approved by	Checked by		Made by
			

Product Specification				
	Model: GKSR070LFLK41	Rev. No.	Issued Date.	Page.
		A	2025/09/30	3 / 24

Contents

- 1. General Description and Features**.....4
- 1.1 Features 4
- 1.2 LCD+RTP Module 4
- 2. Mechanical Information**.....4
- 3. Electrical Specifications**5
- 3.1 Absolute Max. Ratings 5
- 3.2 DC Electrical Characteristics of the LCD 6
- 3.3 AC Timing Characteristic of the LCD 6
- 3.3 Power On Sequence 8
- 3.4 Power Off Sequence 9
- 3.5 3 Lane JEIDA Mode Color Bit Map 9
- 3.6 Back-Light Unit 10
- 4. Optical Characteristics**11
- 4.1 Optical characteristics of the LCD 11
- 5. I/O Terminal**.....14
- 5.1 LCM Pin Assignment 14
- 5.2 Touch Panel Pin Assignment 15
- 5.3 Block Diagram 16
- 6. Displayed Color and Input Data**17
- 7. Projected Capacitive Touch Panel**18
- 7.1 Electrical Characteristics 18
- 7.2 Mechanical & Reliability Characteristics 18
- 8. Reliability Condition**.....19
- 9. Dimensional Outlines**20
- 10. Incoming Inspection Standards**21

Product Specification

	Model: GKSR070LFLK41	Rev. No.	Issued Date.	Page.
		A	2025/09/30	4 / 24

1. General Description and Features

GKSR070LFLK41 is a transmissive type of color active matrix TFT (Thin Film Transistor) liquid crystal display (LCD) that uses amorphous silicon TFT as a switching device. This model is composed of a TFT-LCD module, a driver circuit, touch Panel and a back-light unit. Graphics and texts can be displayed on a WVGA 800 (W) x 3 x 480 (H) dots with 262,144 colors by supplying 18 bits data signal (6bits/each color). The following table describes the features of **GKSR070LFLK41**.

1.1 Features

- Transmissive and back-light with 27 LEDs are available.
- IPS mode.
- LVDS Receiver 18 bits Interface.
- Back-light Dimming control
- 4-wire Touch Panel

1.2 LCD+RTP Module


Item	Specification	Unit
Screen Size	7.0 inches	Diagonal
Display Resolution	800 (H) x 480 (V)	Pixel
Active Area	153.84 (H) x 85.632 (V)	mm
Outline Dimension	165.00 (H) x 104.00 (V) x 6.5 (T)	mm
Display Mode	Normally Black mode / Transmissive	--
Pixel Arrangement	R,G,B Vertical Stripe	--
Pixel Size	192.3 (H) x 178.4 (V)	um
Display Color	262k	Colors
Viewing Direction	Full Viewing Angle	--
Input Interface	LVDS 18 bits	--

2. Mechanical Information

Item	Min.	Typ.	Max.	Unit	Note	
Module Size	Horizontal (H)	164.70	165.00	165.30	mm	
	Vertical (V)	103.70	104.00	104.30	mm	
	Thickness (T)	6.2	6.5	6.8	mm	(1)
Weight	--	113	--	g	--	

Note (1) Not Include Component. Refer to the Outline Dimension Drawing as attached.

Product Specification

	Model: GKSR070LFLK41	Rev. No.	Issued Date.	Page.
		A	2025/09/30	5 / 24

3. Electrical Specifications

3.1 Absolute Max. Ratings

3.1.1 Absolute Ratings of Environment

If the operating condition exceeds the following absolute maximum ratings, the TFT LCD module may be damaged permanently.

($T_a=25\pm 2^\circ\text{C}$, $V_{SS}=\text{GND}=0$)

Item	Symbol	Min.	Max.	Unit	Note
Storage temperature	T_{STG}	-30	80	$^\circ\text{C}$	(1)
Operating temperature	T_{OPR}	-20	70	$^\circ\text{C}$	(1,2,3)

Note (1) 95 % RH Max. ($40^\circ\text{C} \geq T_a$). Maximum wet-bulb temperature at 39°C or less. ($T_a > 40^\circ\text{C}$) No condensation.

Note (2) In case of below 0° , the response time of liquid crystal (LC) becomes slower, and the color of panel becomes darker than normal one. Level of retardation depends on temperature, because of LC's character

Note (3) Only operation is guaranteed at operating temperature. Contrast, response time, another display quality are evaluated at $+25^\circ\text{C}$.

3.1.2 Electrical Absolute Maximum Ratings

($V_{SS}=\text{GND}=0$)

Parameter	Symbol	Min.	Max.	Unit	Remark
Power supply Logic voltage	VCC	-0.3	4.0	V	
Power supply LED voltage	VLED	-0.3	6.0	V	

Product Specification

	Model: GKSR070LFLK41	Rev. No.	Issued Date.	Page.
		A	2025/09/30	6 / 24

3.2 DC Electrical Characteristics of the LCD

(Ta=25±2°C, Vss=GND=0)

Item	Symbol	Min.	Typ.	Max.	Unit	Remark
Power supply Logic Voltage	VCC	3.1	3.3	3.6	V	
Input Voltage for logic	H Level	0.7xVCC	-	VCC	V	
	L Level	0	-	0.3xVCC	V	
Power Supply current	ICC	-	90	-	mA	Note 1

Note1: fv =60Hz , Ta=25°C , Display pattern : All White pattern



3.3 AC Timing Characteristic of the LCD

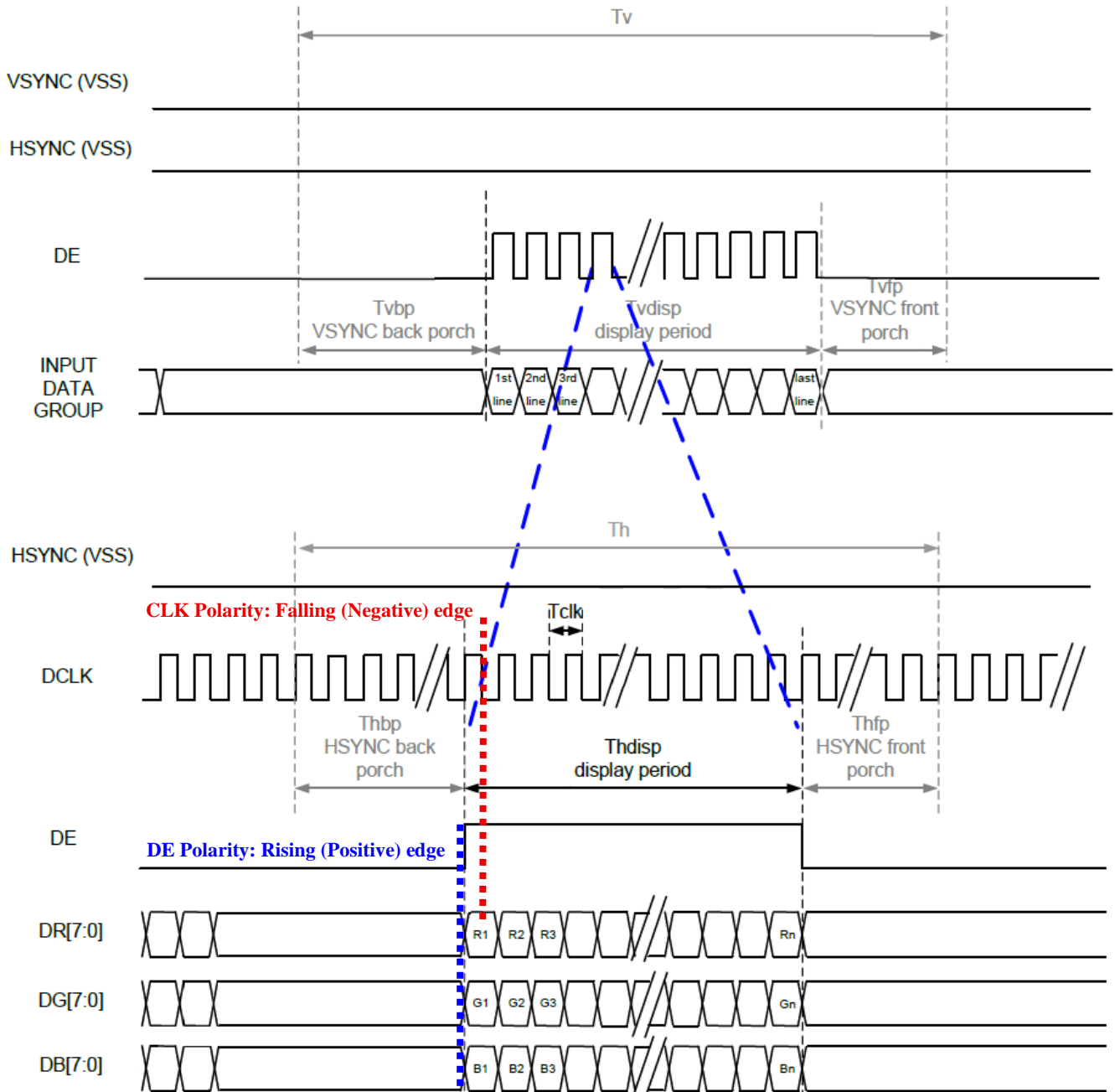
3.3.1 Timing Condition (DE only mode)

Parameter	Symbol	Min.	Typ.	Max.	Unit.	Remark
CLK frequency	F _{CLK}	23	25	27	MHz	
Horizontal display area	T _{HD}	800			CLK	
HS period time	T _H	808	816	848	CLK	
HS blanking	T _{HBP}	4	8	24	CLK	
HSD front porch	T _{HFP}	4	8	24	CLK	
HSD pulse width	t _{hpw}	2	4	8	CLK	
Vertical display area	T _{VD}	480			H	
VS period time	T _V	496	512	528	H	
VS blanking	T _{VFP}	8	16	24	H	
VSD front porch	t _{vfp}	8	16	24	H	
VSD pulse width	t _{vpw}	2	4	8	H	


Product Specification

	Model: GKSR070LFLK41	Rev. No.	Issued Date.	Page.
		A	2025/09/30	7 / 24

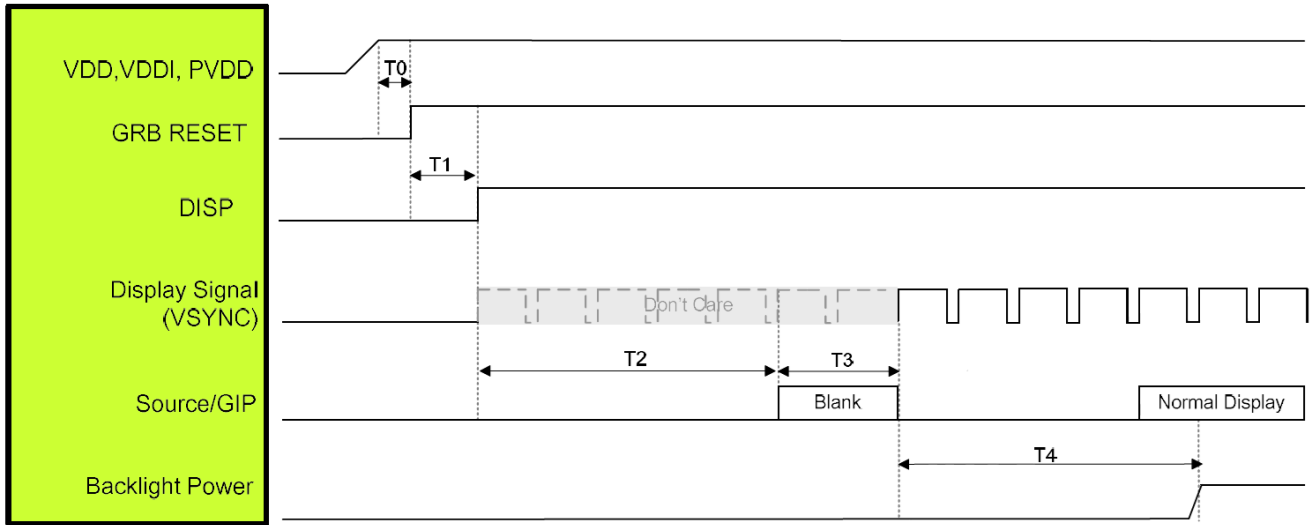
3.3.2 Timing Characteristic



Product Specification

	Model: GKSR070LFLK41	Rev. No.	Issued Date.	Page.
		A	2025/09/30	8 / 24

3.3 Power On Sequence



Symbol	Description	Time	Unit
T0	System power stability to GRB RESET signal	≥ 1	ms
T1	GRB RESET= "High" to DISP= "High"	≥ 10	ms
T2	DISP= "High" to Source/GIP scan blank	85	ms
T3	IC scan blanking signal ≥ 33	≥ 33	ms
T4	Display signal input to Backlight power on (based on Display Signal Frame Rate 60Hz)	≥ 100	ms

Product Specification



Model: GKSR070LFLK41

Rev. No.

Issued Date.

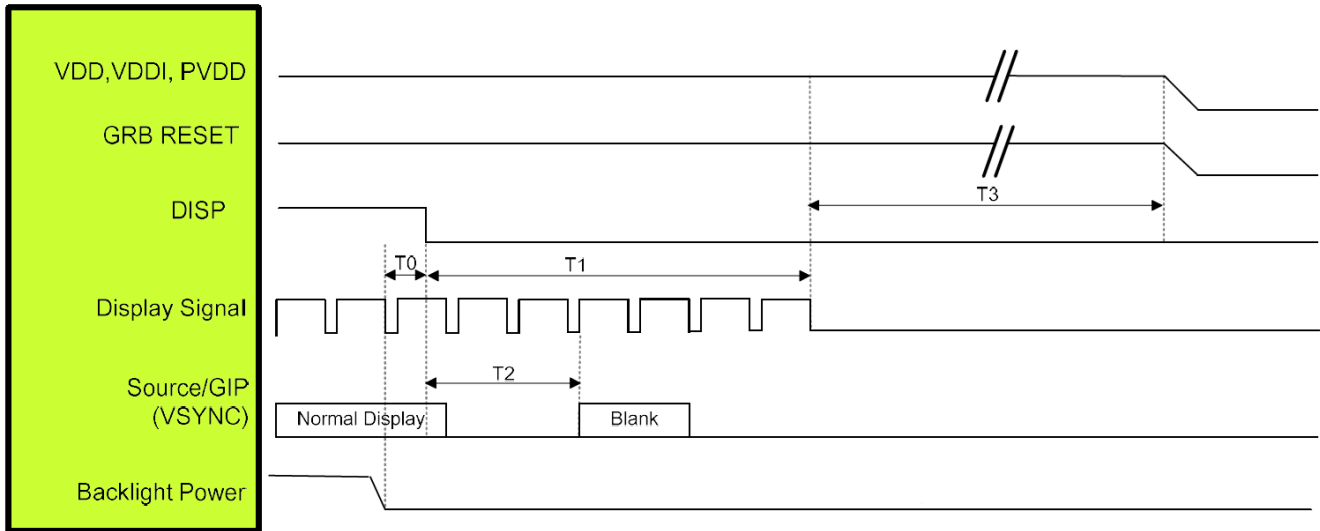
Page.

A

2025/09/30

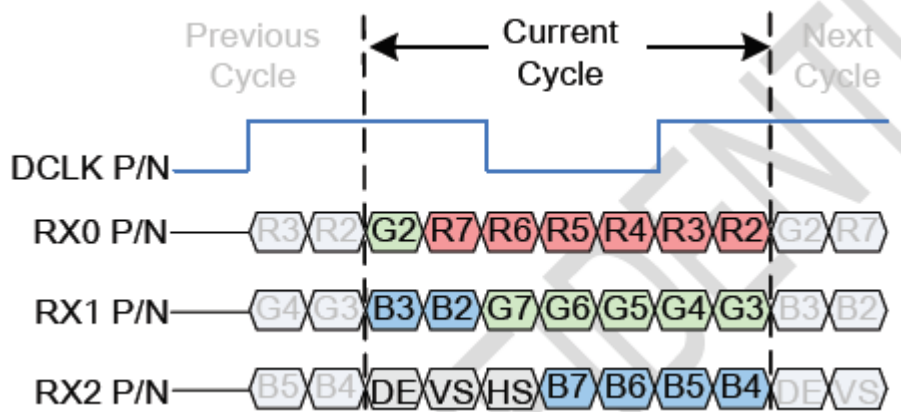
9 / 24

3.4 Power Off Sequence




Symbol	Description	Time	Unit
T0	Backlight Power off to DISP= "Low"	≥1	ms
T1	DISP= "Low" to IC internal voltage discharge complete	≥100	ms
T2	DISP= "Low" to Source/GIP scan blank (based on Display Signal Frame Rate 60Hz)	≤50	ms
T3	IC internal voltage discharge is completed to VDD/VDDI/PVDD off	≥0	ms

3.5 3 Lane JEIDA Mode Color Bit Map



Product Specification

	Model: GKSR070LFLK41	Rev. No.	Issued Date.	Page.
		A	2025/09/30	10 / 24

3.6 Back-Light Unit

The Back-light system is an edge-lighting type with 27 white LEDs (Light Emitting Diode). The characteristics of 27 white LEDs are shown in the following tables.


(Ta= Room Temp)

Characteristics	Symbol	Min.	Typ.	Max.	Unit	Note
Power supply LED Driver Voltage	VLED	-	5	-	V	
LED Driver Current	ILED	-	400	-	mA	
Power Consumption	P _{BL}	-	2000	-	mW	(1)
LED Lifetime	-	50000	-	-	hr	(2)

Note (1) LEDs in 3 series x 9 parallel type.

(2) The environmental conducted under ambient air flow ,at Ta=25±2°C, 60%RH±5%

Product Specification

	Model: GKSR070LFLK41	Rev. No.	Issued Date.	Page.
		A	2025/09/30	11 / 24

4. Optical Characteristics

4.1 Optical characteristics of the LCD

The following items are measured under stable conditions. The optical characteristics should be measured in a dark room or equivalent state with the methods.

Measuring equipment: BM-7A

Item	Symbol	Condition	Min	Type	Max	Unit	Note	
Brightness (LCM+CTP)	B		(400)	(440)	--	cd/m ²		
Response time	T _r +T _f	θ=0°	--	25	--	ms	.	
Contrast ratio	CR	At optimized viewing angle	800	1000	--	--		
Color Gamut	NTSC %	--	--	50	--	%		
Luminance Uniformity	ΔL		80	85		%		
Color Chromaticity (CIE 1931)	White	W _x	θ=0° Normal Viewing Angle	(0.220)	(0.270)	(0.320)	--	BM-7A
		W _y		(0.270)	(0.320)	(0.370)		
Viewing Angle	Hor.	θ _R	CR≥10	--	85	--	Degree	
		θ _L		--	85	--		
	Ver.	θ _U		--	85	--		
		θ _D		--	85	--		

a. Test equipment setup

After stabilizing and leaving the panel alone shall be warmed up for the stable operation of LCM, the measurement should be executed. Measurement should be carried out in a stable, windless, dark room. Optical specifications are measured by Topcon BM-7A(fast) with a viewing angle of 2° at the distance of 50cm and normal direction.

b. Definition of response time: Tr and Tf

The response time is defined as the following figure and shall be measured by switching the input signal for "black" and "white".

Product Specification



Model: GKSR070LFLK41

Rev. No.

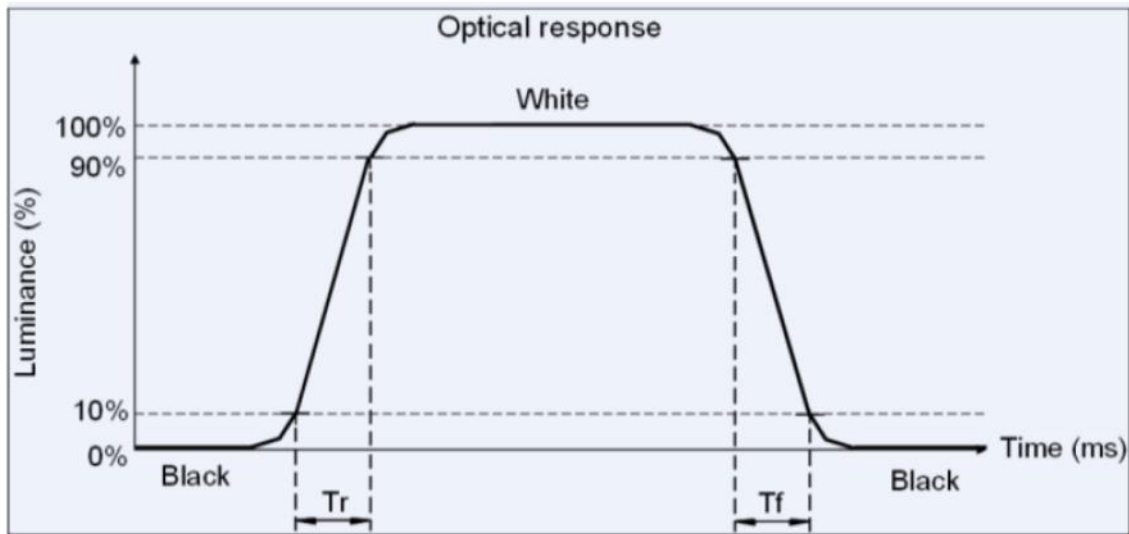
Issued Date.

Page.

A

2025/09/30

12 / 24



c. Definition of contrast ratio:

Brightness measured when LCD is at "white state"

Contrast Ratio (CR) = _____

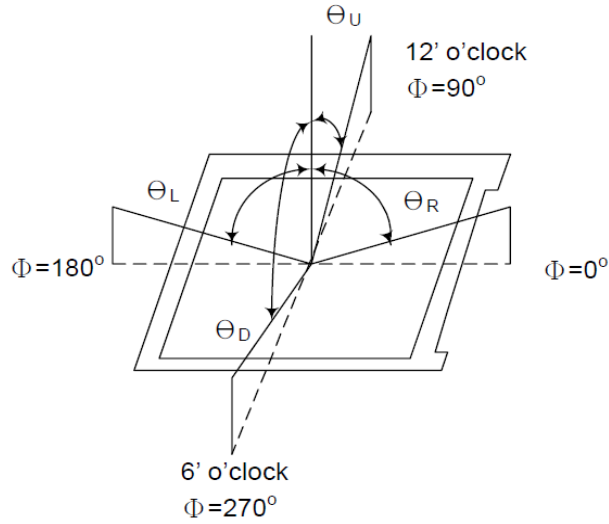
Brightness measured when LCD is at "black state"

d. Measured at the center area of the panel when all the input terminals of LCD panel are electrically opened.

Product Specification

	Model: GKSR070LFLK41	Rev. No.	Issued Date.	Page.
		A	2025/09/30	13 / 24

e. Viewing Angle



f. Definition of Luminance of White: Luminance of white at the center points

Light Source of Back-Light Unit	LED Type
---------------------------------	----------

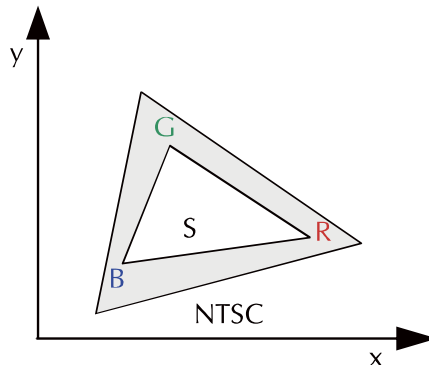
g. Definition of White Uniformity

$$\text{White Uniformity} = \frac{\text{Min. luminance of white among 9-points}}{\text{Max. luminance of white among 9-points}} \times 100\%$$


h. The definition of Color Gamut -Color Chromaticity CIE 1931

Color coordinate of white & red, green, blue at center point.

Color Gamut: NTSC (%) = (RGB Triangle Area / NTSC Triangle Area) x 100



Product Specification

	Model: GKSR070LFLK41	Rev. No.	Issued Date.	Page.
		A	2025/09/30	14 / 24

5. I/O Terminal

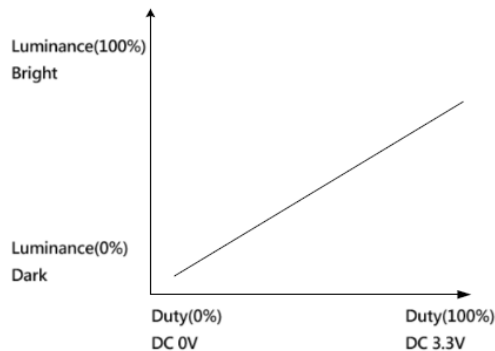
5.1 LCM Pin Assignment

Pin No.	Symbol	I/O	Function	Remark
1	VCC	P	Power Supply for LCD (+3.3V)	
2	VCC	P	Power Supply for LCD (+3.3V)	
3	VSS	P	Ground	
4	VSS	P	Ground	
5	RIN0-	I	Negative LVDS differential data input	
6	RIN0+	I	Positive LVDS differential data input	
7	VSS	P	Ground	
8	RIN1-	I	Negative LVDS differential data input	
9	RIN1+	I	Positive LVDS differential data input	
10	VSS	P	Ground	
11	RIN2-	I	Negative LVDS differential data input	
12	RIN2+	I	Positive LVDS differential data input	
13	VSS	P	Ground	
14	RCLK-	I	Negative LVDS differential clock input	
15	RCLK+	I	Positive LVDS differential clock input	
16	VSS	P	Ground	
17	VLED	P	Power Supply for LED Driver Voltage (+5V)	
18	VLED	P	Power Supply for LED Driver Voltage (+5V)	
19	ADJ	I	Back-light Dimming control	
20	VSS	P	Ground	


I: Input, O: Output, P: Power

Notes:

- 1) NC Pin must be retained; this pin can't contact GND or other signals.
- 2) GND Pin must ground contact, cannot be floating.
- 3) Connector Part No: STM MSB24013P20A or equivalent.
- 4) Back-light Dimming : (1) Normal Brightness : 3.3V or 100% PWM duty
 (2) Brightness control : 0V to 3.3V DC or 0% to 100% PWM duty
 (3) This Pin cannot be floating



Product Specification

	Model: GKSR070LFLK41	Rev. No.	Issued Date.	Page.
		A	2025/09/30	15 / 24

5.2 Touch Panel Pin Assignment

Pin No.	Symbol	Function	Remark
1	Y2	Touch Panel Up	
2	X2	Touch Panel Right	
3	Y1	Touch Panel Down	
4	X1	Touch Panel Left	

Connector Part No: CVILUX CF25041D0R0-10-NH or equivalent.

Product Specification



Model: GKSR070LFLK41

Rev. No.

Issued Date.

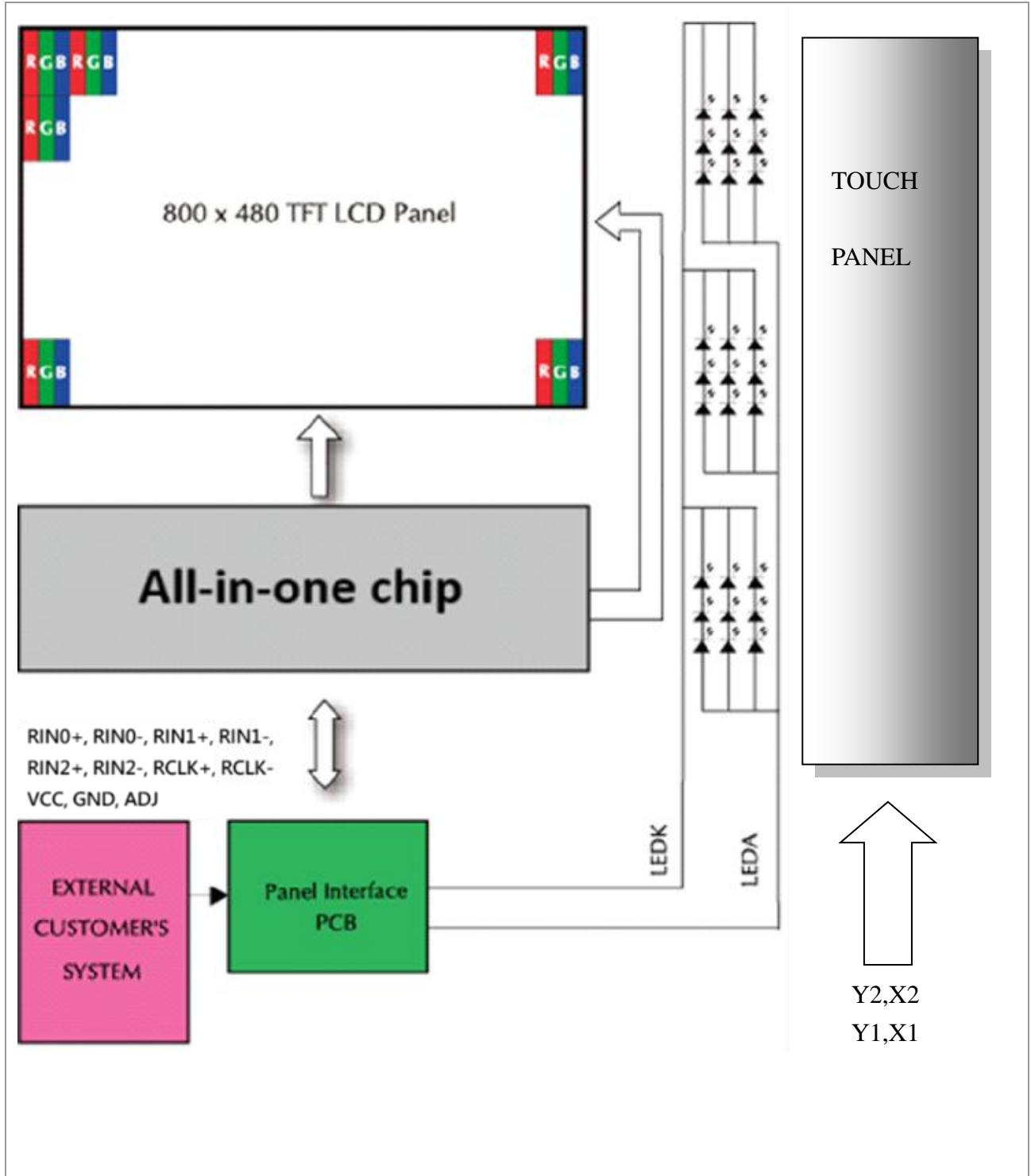
Page.

A

2025/09/30

16 / 24

5.3 Block Diagram



Product Specification

	Model: GKSR070LFLK41	Rev. No.	Issued Date.	Page.
		A	2025/09/30	17 / 24

6. Displayed Color and Input Data

	Color & Gray Scale	Data Signal																	
		R5	R4	R3	R2	R1	R0	G5	G4	G3	G2	G1	G0	B5	B4	B3	B2	B1	B0
Basic Color	Black	0	0	0	0	0	0	0	0	0	0	0	0	0	0	0	0	0	0
	Red (0)	1	1	1	1	1	1	0	0	0	0	0	0	0	0	0	0	0	0
	Green (0)	0	0	0	0	0	0	1	1	1	1	1	1	0	0	0	0	0	0
	Blue (0)	0	0	0	0	0	0	0	0	0	0	0	0	1	1	1	1	1	1
	Cyan	0	0	0	0	0	0	1	1	1	1	1	1	1	1	1	1	1	1
	Magenta	1	1	1	1	1	1	0	0	0	0	0	0	1	1	1	1	1	1
	Yellow	1	1	1	1	1	1	1	1	1	1	1	1	0	0	0	0	0	0
	White	1	1	1	1	1	1	1	1	1	1	1	1	1	1	1	1	1	1
Red	Black	0	0	0	0	0	0	0	0	0	0	0	0	0	0	0	0	0	0
	Red (1)	0	0	0	0	0	1	0	0	0	0	0	0	0	0	0	0	0	0
	Red (2)	0	0	0	0	1	0	0	0	0	0	0	0	0	0	0	0	0	0
	:	:	:	:	:	:	:	:	:	:	:	:	:	:	:	:	:	:	:
	Red (31)	0	1	1	1	1	1	0	0	0	0	0	0	0	0	0	0	0	0
	:	:	:	:	:	:	:	:	:	:	:	:	:	:	:	:	:	:	:
	Red (62)	1	1	1	1	1	0	0	0	0	0	0	0	0	0	0	0	0	0
	Red (63)	1	1	1	1	1	1	0	0	0	0	0	0	0	0	0	0	0	0
Green	Black	0	0	0	0	0	0	0	0	0	0	0	0	0	0	0	0	0	0
	Green (1)	0	0	0	0	0	0	0	0	0	0	0	1	0	0	0	0	0	0
	Green (2)	0	0	0	0	0	0	0	0	0	0	1	0	0	0	0	0	0	0
	:	:	:	:	:	:	:	:	:	:	:	:	:	:	:	:	:	:	:
	Green (31)	0	0	0	0	0	0	0	1	1	1	1	0	0	0	0	0	0	0
	:	:	:	:	:	:	:	:	:	:	:	:	:	:	:	:	:	:	:
	Green (62)	0	0	0	0	0	0	1	1	1	1	1	0	0	0	0	0	0	0
	Green (63)	0	0	0	0	0	0	1	1	1	1	1	1	0	0	0	0	0	0
Blue	Black	0	0	0	0	0	0	0	0	0	0	0	0	0	0	0	0	0	0
	Blue (1)	0	0	0	0	0	0	0	0	0	0	0	0	0	0	0	0	0	1
	Blue (2)	0	0	0	0	0	0	0	0	0	0	0	0	0	0	0	0	1	0
	:	:	:	:	:	:	:	:	:	:	:	:	:	:	:	:	:	:	:
	Blue (31)	0	0	0	0	0	0	0	0	0	0	0	0	0	1	1	1	1	1
	:	:	:	:	:	:	:	:	:	:	:	:	:	:	:	:	:	:	:
	Blue (62)	0	0	0	0	0	0	0	0	0	0	0	0	1	1	1	1	1	0
	Blue (63)	0	0	0	0	0	0	0	0	0	0	0	0	1	1	1	1	1	1

0 : Low level voltage, 1 :High level voltage

Each basic color can be displayed in 64 gray scales from 6 bit data signals. With the combination of total 18 bit data signals, the 262,144-color display can be achieved on the screen.

Product Specification



Model: GKSR070LFLK41

Rev. No.

Issued Date.

Page.

A

2025/09/30

18 / 24

7. Projected Capacitive Touch Panel

7.1 Electrical Characteristics

Item	Min.	Typ.	Max.	Unit	Note
Linearity	-1.5	-	1.5	%	Analog X and Y directions
Terminal resistance	200	-	400	Ω	Y (Glass side)
	200	-	900	Ω	X (Film side)
Insulation resistance	20	-	-	M Ω	DC 25V
Voltage	3	-	15	V	1mA
Response time	-	15	-	ms	
Transparency	-	78	-	%	Non-glare

Caution (1): Do not operate it with anything except a polyacetal pen (tip R0.8mm or less) or a finger, especially those with hard or sharp tips such as a ball point pen or a mechanical pencil.

7.2 Mechanical & Reliability Characteristics


Item	Min.	Typ.	Max.	Unit	Note
Activation force	60		100	g	(1)
Hitting Durability	1,000,000	-	-	times	(2)
Sliding Durability	100,000			times	
Surface hardness	3	-	-	H	JIS K5400

Note (1) Input: Finger or polyacetal pen 0.8R

Note (2) Pit 1,000,000 times on the Film with a R8.0 (Hardness 60°) silicon rubber.

- Force: 250g
- Frequency: 2 times/sec

Product Specification

	Model: GKSR070LFLK41	Rev. No.	Issued Date.	Page.
		A	2025/09/30	19 / 24

8. Reliability Condition

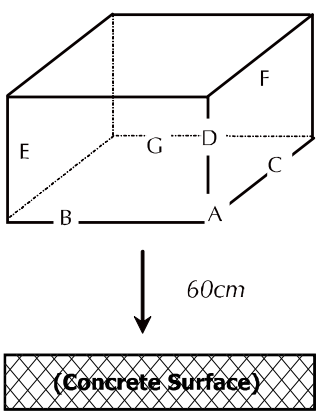
No change on display and in operation under the following test condition.

Condition: Unless otherwise specified, tests will be conducted under the following conditions.

Temperature: $20 \pm 5^\circ\text{C}$.

Humidity: $65 \pm 5\% \text{RH}$.

Tests will not be conducted under functioning state.

No.	Parameter	Condition	Notes
1	High Temperature Operating	$70^\circ\text{C} \pm 2^\circ\text{C}$, 240hrs (Operation state).	
2	Low Temperature Operating	$-20^\circ\text{C} \pm 2^\circ\text{C}$, 240hrs (Operation state).	1
3	High Temperature Storage	$80^\circ\text{C} \pm 2^\circ\text{C}$, 240hrs.	2
4	Low Temperature Storage	$-30^\circ\text{C} \pm 2^\circ\text{C}$, 240hrs.	1,2
5	High Temperature and High Humidity Storage	$60^\circ\text{C} \pm 2^\circ\text{C}$, 90%, 240hrs.	1,2
6	Vibration Test	Total fixed amplitude: 1.5mm. Vibration Frequency: 10~55Hz. One cycle for 60 seconds to 3 directions of X, Y, Z each 15 minutes.	3
7.	Drop Test	To be measured after dropping from 60cm high on the concrete surface in packing state.  <div style="margin-left: 20px;"> <i>Dropping method corner dropping:</i> <i>A corner: Once edge dropping.</i> <i>B, C, D edge: Once face dropping.</i> <i>E, F, G face: Once.</i> </div>	

- Notes:
1. No dew condensation to be observed.
 2. The function test shall be conducted after 4 hours storage at the normal temperature and humidity after removed from the test chamber.
 3. Vibration test will be conducted to the product itself without putting I in a container.

Product Specification



Model: GKSR070LFLK41

Rev. No.

Issued Date.

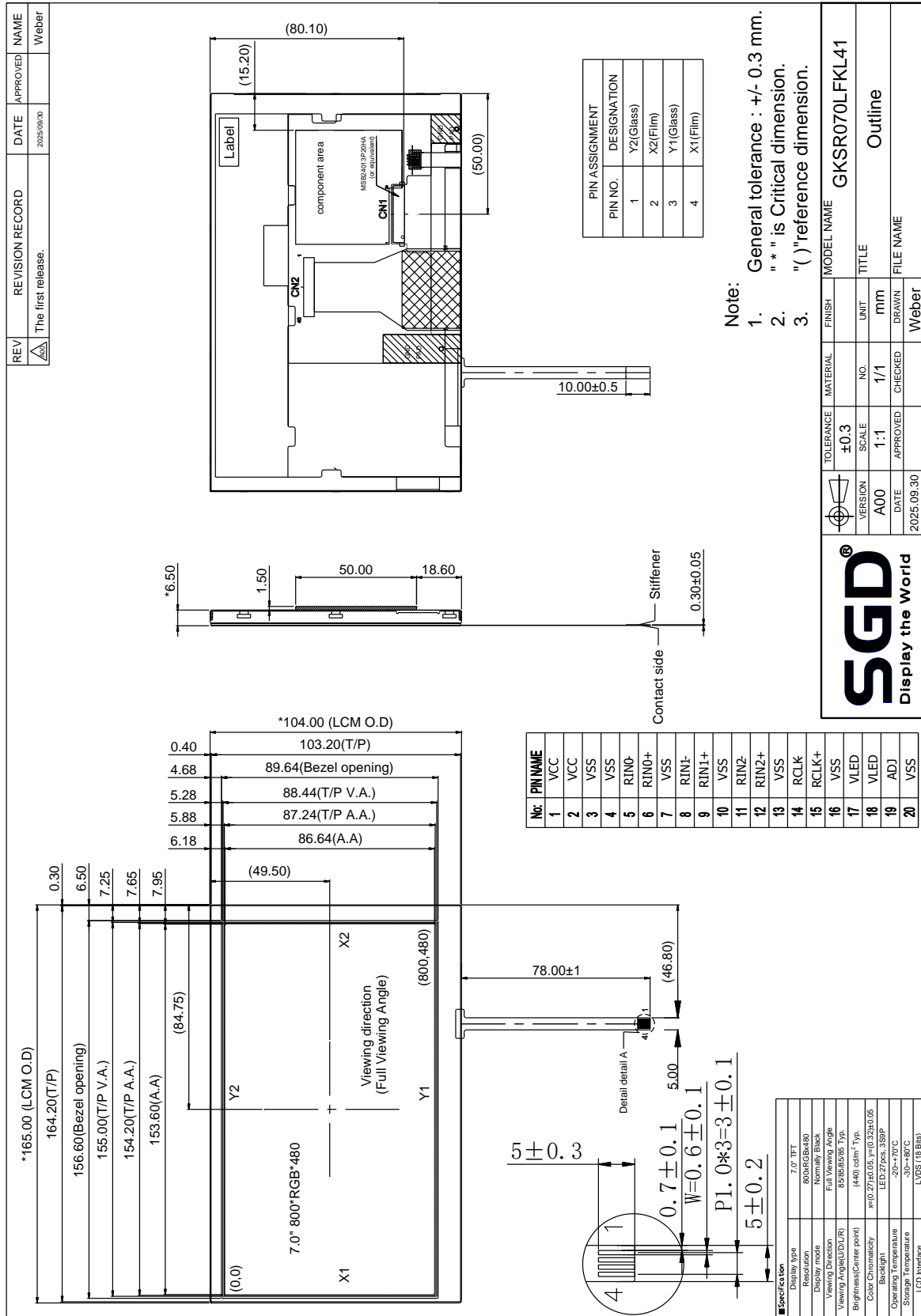
Page.

A


2025/09/30

20 / 24

9. Dimensional Outlines



Product Specification

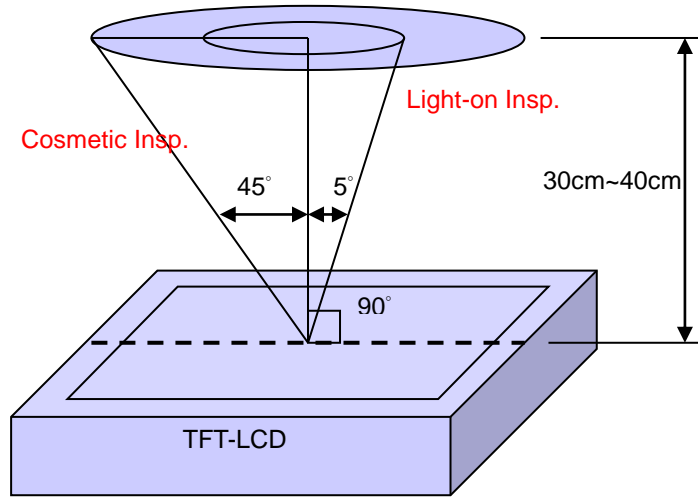
	Model: GKSR070LFLK41	Rev. No.	Issued Date.	Page.
		A	2025/09/30	21 / 24

10. Incoming Inspection Standards

10.1 Inspection and Environment Conditions

10.1.1 Inspection Conditions:

- (1) Inspection Distance: 35 cm±5cm
- (2) Viewing Angle : Light-on Inspection Angle : ±5°
Cosmetic Inspection Angle : ±45°



(perpendicular to LCD panel surface)

10.1.2 Environment Conditions:

Ambient Temperature		23°C ±5°C
Ambient Humidity		55±10%RH
Ambient Illumination	Cosmetic Inspection	more than 600 Lux
	Functional Inspection	300~500 Lux

10.1.3 Sampling Conditions:

- (1) Lot Size: Quantity of shipment lot per model
- (2) Sampling Method:

Sampling Plan		MIL-STD-105E	
		Normal Inspection, Single Sampling	
		Level II	
AQL	Major Defect	1.0%	
	Minor Defect	1.5%	

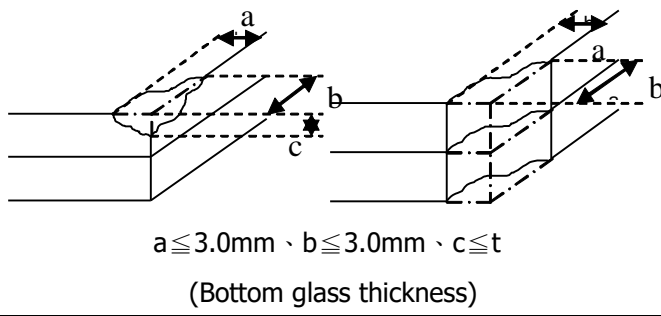
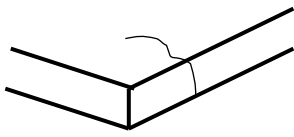
- (3) The classification of Major (MA) and Minor (MI) defects is shown as 3. Inspection Criteria.

Product Specification


	Model: GKSR070LFLK41	Rev. No.	Issued Date.	Page.
		A	2025/09/30	22 / 24

10.1.4 Inspection Criteria

10.1.4.1 Cosmetic Inspection (Panel):

Item	Judgment Criteria	Classification
Chipping on Panel	 <p style="text-align: center;">$a \leq 3.0\text{mm}$ · $b \leq 3.0\text{mm}$ · $c \leq t$ (Bottom glass thickness)</p>	MA
Scratch on Panel *Note-2	$W \leq 0.05\text{mm}$ or $L < 5\text{mm}$: Ignored $0.05\text{mm} < W \leq 0.1\text{mm}$ and $L \leq 5\text{mm}$: $N \leq 5$ $W > 0.1\text{mm}$ or $L > 5\text{mm}$: Not allowed	MI
Bubble or Dent on Panel *Note-3	$D \leq 0.2\text{mm}$: Ignored $0.2\text{mm} < D \leq 0.3\text{mm}$: $N \leq 5$ $D > 0.3\text{mm}$: Not allowed	MI
Panel Crack	 <p style="text-align: center;">Not Allowed crack</p>	MA
Bezel Deformation	Obvious deformation is not allowed.	MI
Bezel Oxidation	Not allowed if it rusts continuously over 1 cm (It is out of warranty with rusted tin plate)	MI
Bezel Scratch	$L \leq 20\text{mm}$, $W \leq 0.2$, $N \leq 3$	MI
Metal Squash Dent /Flange (Front Side)	$D(W) \leq 1, L \leq 3, N \leq 3$;	MI
B/L High Voltage Wire Denudation	Not allowed	MA
Polarizer flaw or leak out resin	Defect is defined as the active area.	MI
Outline Dimension	Must in Spec, refer to related product spec.	MI

Product Specification

	Model: GKSR070LFLK41	Rev. No.	Issued Date.	Page.
		A	2025/09/30	23 / 24

10.1.4.2 Functional Inspection:

Item	Judgment Criteria			Classification
	Area (Note1)	I	O	
Point Defect	Bright dot	Random	2	
		2 dots adjacent	0	0
		3 dots adjacent or more	0	0
	Dark dot	Random	3	
		2 dots adjacent	0	
		3 dots adjacent or more	0	0
	Total Dot Defect		5	
	Distance	Distance between Bright and Bright dot	$L \geq 5\text{mm}$	
		Distance between Bright and Dark dot	$L \geq 5\text{mm}$	
		Distance between Dark dot	$L \geq 5\text{mm}$	
(1) It is defined as Point Defect if defect area $> 0.5\text{dot}$ (2) It is ignored if defect area $\leq 0.5\text{dot}$ (3) Weak point defect will be defined as Bright Dot if it can be observed through ND filter 5% (Full Screen Black Inspection)				
Line Defect	Obviously vertical or horizontal line defect is not allowed.			MA
Mura	Not allowed if it can be observed through ND Filter 5 %			MI
Foreign Material in spot shape *Note-3	$D \leq 0.2\text{mm}$: Ignored $0.2\text{mm} < D \leq 0.5\text{mm}$: $N \leq 8$ $D > 0.5\text{mm}$: Not allowed			MI
Foreign Material in line or spiral shape *Note-4	$W \leq 0.05\text{mm}$ or $L \leq 5\text{mm}$: Ignored $0.05\text{mm} < W \leq 0.2\text{mm}$ and $L 1.0\text{mm} \leq 5\text{mm}$: $N \leq 8$ $W > 0.2\text{mm}$ or $L > 5\text{mm}$: Not allowed			MI
Display Function Abnormal	No Malfunction can be allowed			MA

Product Specification



Model: GKSR070LFLK41

Rev. No.

Issued Date.

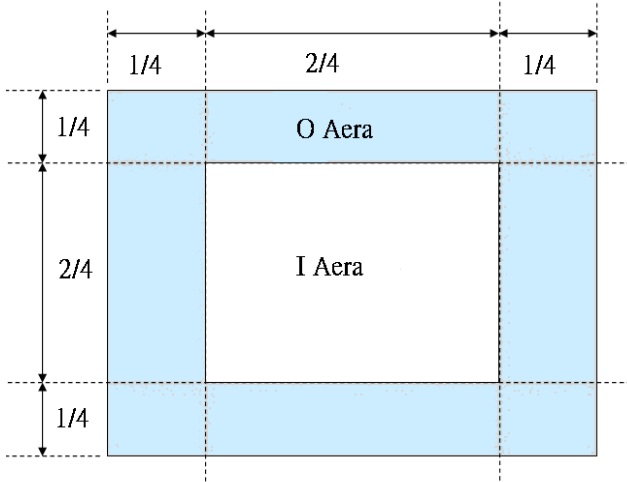
Page.

A

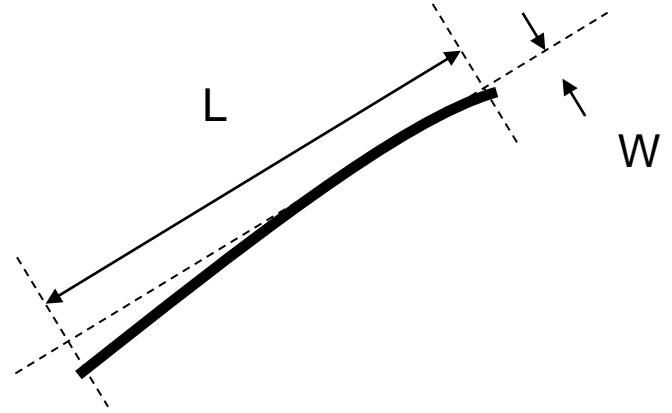
2025/09/30

24 / 24

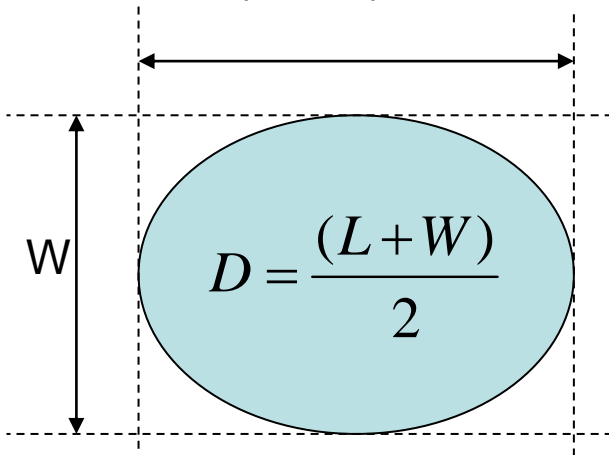
Note-1 : I/O Area Definition



Note-2 : Polarizer Scratch



Note-3 : Spot Foreign Material
($W \geq L / 4$)



Note-4 : Line or Spiral Foreign Material
($W < L / 4$)

